

**Please register for the programs,  
activities and events offered**

**Chapleau Cree First Nation**

P.O. Box 400  
828 Fox Lake Road  
Chapleau ON  
P0M 1K0

Phone: 705-864-0784  
Fax: 705-864-1760  
E-mail: reception@chapleaucree.ca

**Life's Sacred Journey**

P.O. Box 400  
814 Fox Lake Road  
Chapleau ON  
P0M 1K0

Phone: 705-860-0003  
Fax: 705-860-0004  
E-mail: bandrep@lifessacredjourney.ca

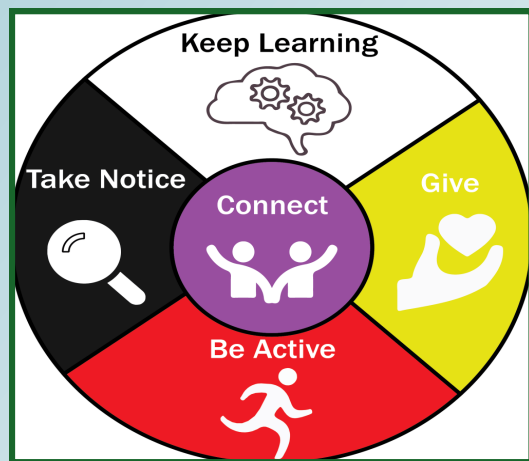
**Chapleau Cree Health Centre**

P.O. Box 400  
801 Fox Lake Road  
Chapleau ON  
P0M 1K0

Phone: 705-864-0200  
Fax: 705-864-0206  
E-mail: h.adminassist@chapleaucree.ca



 <https://www.facebook.com/groups/118989737892773>



For the week of:  
**December 16 to  
December 22, 2024**

**Winter Hours:**  
**Monday - Friday  
8:30AM - 4:30PM**

Participation and Feedback on  
Activities/Events/Programs is  
always welcomed

Please submit feedback to  
**Kyle Corston @ 705-864-0784** or  
[communityrelations@chapleaucree.ca](mailto:communityrelations@chapleaucree.ca)



***This Week's Highlights:***

- **Bowen Therapy**
- **Kids Xmas Slime Making Party**
  - **Lunch & Learn**  
**(Seasonal Affective Disorder)**
- **Xmas Cookie Exchange!**
  - **Chiropractor**
  - **Staff Lunch**
- **Offices Closed for Xmas Break**  
**(December 20, 2024-January 6, 2025)**





**Oški-kíšikâw**  
**MONDAY**  
**Piwahtakini-Pisim**  
**December 16**

*Happy Monday!*



**Nîso-kíšikâw**  
**TUESDAY**  
**Piwahtakini-Pisim**  
**December 17**



**Town Run**  
**10:00 a.m.**  
Call **Health** at  
**705-864-0200** before 9am  
to get picked up

**Bowen Therapy**  
**w/ D. Barnes**



**1pm-8pm @ Health**

**Kids Christmas Slime**  
**Making Party**



**5:30pm-8pm @ Health**



**Apihtawan**  
**WEDNESDAY**  
**Piwahtakini-Pisim**  
**December 18**

**Bowen Therapy**  
**w/ D. Barnes**



**10am-5pm @ Health**

**Lunch & Learn**  
**(Seasonal Affective Disorder)**



**12pm-1pm @ Health**

**Xmas Cookie**  
**Exchange!**



**7pm-8:30pm @ Health**



**Nêwi-kíšikâw**  
**THURSDAY**  
**Piwahtakini-Pisim**  
**December 19**

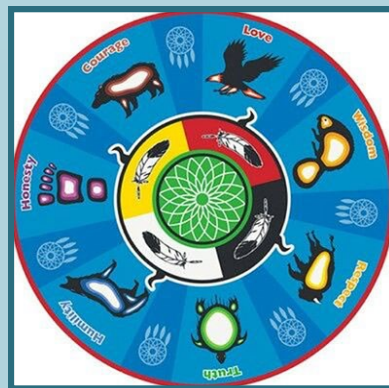


**Town Run**  
**10:00 a.m.**  
Call **Health** at  
**705-864-0200** before 9am  
to get picked up

**Chiropractor in Spa**  
**Room**



**10am-3pm @ Health**



**Pahkwêšikani-kíšikâw**  
**FRIDAY**  
**Piwahtakini-Pisim**  
**December 20**

**Staff Christmas Lunch**



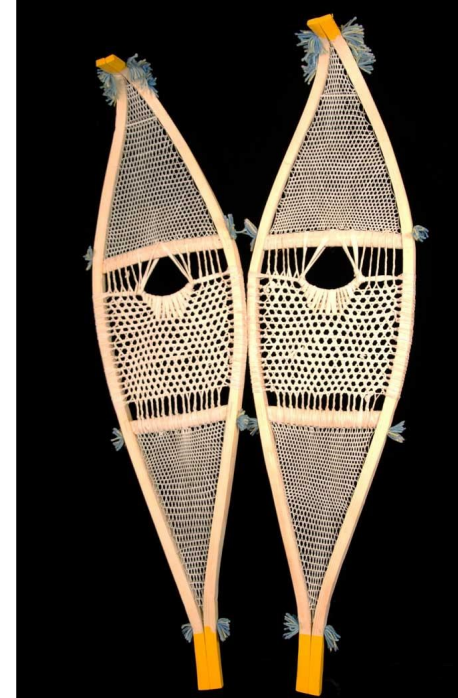
**12pm-1pm @ Band Office**

**OFFICES CLOSED**  
**FROM**  
**December 20, 2024**  
**to January 6, 2025**  
**for Xmas Holidays!**



**Not Receiving the**  
**Weekly Pamphlet in a**  
**timely manner?**  
Call **Kyle Corston** at the  
**Band Office 705 864 0784**  
and give your email—  
you'll  
receive the pamphlet  
right to your in-box

**Matinawe-Kisikaw**  
**SATURDAY**  
**Piwahtakini-Pisim**  
**December 21**



**Ayamihêwi-kíšikâw**  
**SUNDAY**  
**Piwahtakini-Pisim**  
**December 22**





Chapleau Cree First Nation

P.O. Box 400 ♦ Fox Lake Reserve ♦ Chapleau, Ontario ♦ P0M 1K0

Tel: (705) 864-0784 ♦ Fax (705) 864-1760

[reception@chapleaucree.ca](mailto:reception@chapleaucree.ca)

# NOTICE

## ON Reserve Holiday Garbage Pickup

WHOM: CCFN On Reserve Residents  
WHEN: **DEC 22<sup>nd</sup>, 2024, to JAN 3<sup>th</sup>, 2025**  
WHERE: **Chapleau Cree First Nation**

### Change of Garbage Pickup Schedule

Due to the Holiday Schedule for the Chapleau Township Landfill we will be adjusting our regular household garbage pickup schedule.

Dates will be the following:

**Tuesday December 24<sup>th</sup>, 2024**

**Friday December 27<sup>th</sup>, 2024**

**Friday January 3<sup>rd</sup>, 2025**

Garbage pickup regular schedule resumes on

Tuesday January 7, 2025.

**Thank you for your understanding**

Happy Holidays to everyone.



The logo for McDougall Energy, featuring the name "McDougall" in a large blue font above the word "ENERGY" in a smaller blue font. A vertical line is positioned to the right of the text.

**McDougall**  
ENERGY



**NASCO**  
**PROPANE**

**McDougall Energy** has purchased  
**Nasco Propane** as of November 5th, 2024.

As a result of the merger, there have been some  
delays in regular deliveries.

The Band Office has contacted the dispatch office,  
who have assured us that there will be **no change**  
to the Automatic Deliveries that were  
arranged with Nasco.

Propane bills are payable to McDougall, but there  
should be no changes to your account information.  
Homeowners and rental tenants are responsible for  
their own propane bills, however, if you have any  
concerns about your next delivery, please contact  
Padraic Taaffe at the Band Office at **705-864-0784**.



GIFT GRAB GAME

HOT CHOCOLATE BAR

# Gingerbread House Decorating and Christmas Movie Party

DECEMBER 15, 2024

1:00PM - 4:00PM

FOOD | FUN | MUSIC | MOVIE

TO REGISTER CALL HEALTH - 705-864-0200

CALL NATHALIE FOR INQUIRIES - EXT. 324

LOCATION - BAND OFFICE BASEMENT

OPEN TO CCEN BAND MEMBERS CHILDREN 6 YEARS OLD AND  
YOUNGER TO BE ACCOMPANIED BY PARENT





# BOWEN

with Dorcas Barnes

**December 17th appointments**

**1:00 PM–8:00 PM**

**December 18th appointments**

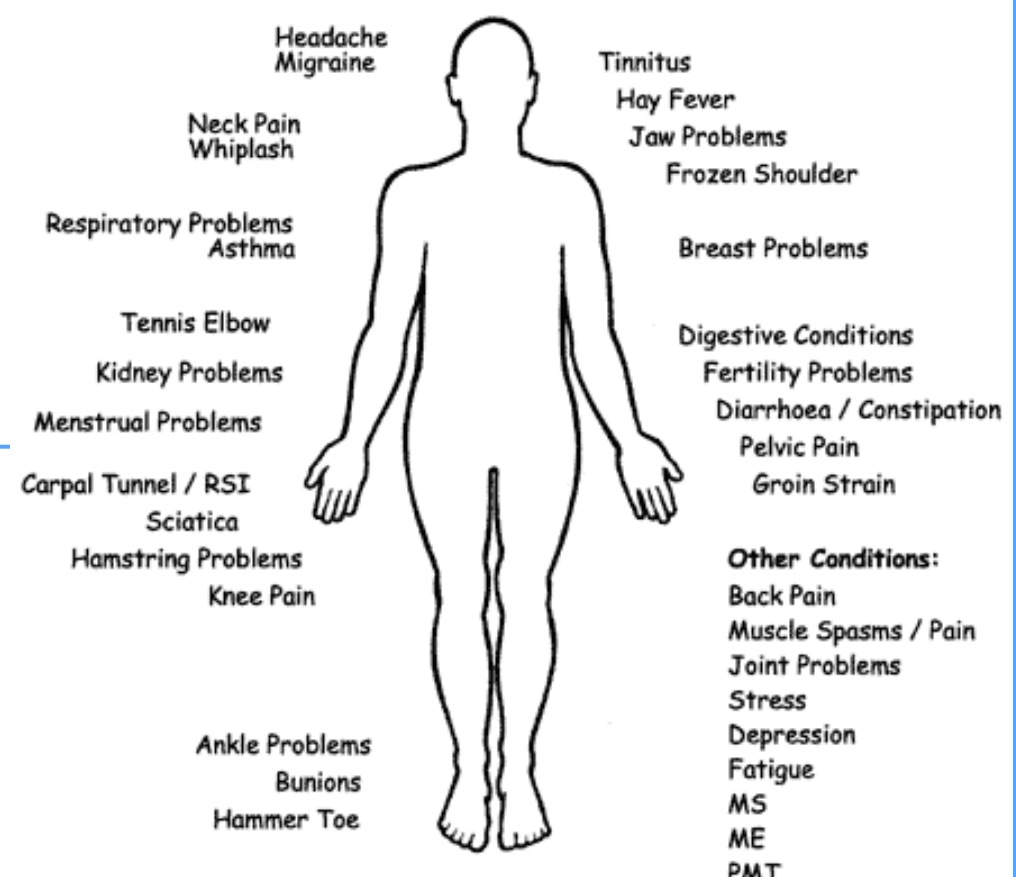
**10:00 AM–5:00 PM**

**at Health Centre**

## Bowen Therapy

The Bowen Technique is a gentle non-invasive, holistic therapy. It can benefit adults and children of all ages

Conditions Which Have Responded to The Bowen Technique



Call to book your appointment at Health  
705-864-0200

Priority CCFN Members, waitlist welcomed





**KIDS CHRISTMAS**

# **SLIME**

# Workshop

**17 DECEMBER, 2024 | 5:30PM - 8:00PM**

TO REGISTER, CALL HEALTH -  
705-864-0200

FOR INQUIRIES CALL NATHALIE -  
EXT. 203

**OPEN TO CCFN BAND MEMBERS, CHILDREN  
6 YEARS OLD AND YOUNGER TO BE  
ACCOMPANIED BY PARENT**





ST. JOHN'S IRS INITIATIVE

# ELDER'S BRUNCH

---

DECEMBER 18, 2024

10:30 AM - CHAPLEAU OJIBWE  
BAND OFFICE



FOR QUESTIONS OR TO RSVP  
PLEASE CALL  
CONNIE AT 705-992-4810 OR  
DEANNA AT 705-864-0784 X 223



# Seasonal Affective Disorder (SAD)

## Lunch & Learn



**DECEMBER 18TH**

**12:00 NOON**

**Chapleau Cree Health Centre**



Register for this event at Health 705-864-0200





**MERRY  
CHRISTMAS  
And Happy New Year**



**CHRISTMAS HEALTH OFFICE CLOSURE  
REMINDER!**

**OFFICE CLOSED DEC. 20TH @ 11:00 AM – JAN. 6TH**

**PLEASE NOTE THAT THE LAST TOWN RUN OF 2024 WILL BE ON  
DEC. 19TH AND TOWN RUN WILL RESUME ON JAN 7TH, 2025.**

**PLEASE ENSURE THAT YOU HAVE ENOUGH SUPPLIES AND  
MEDICATIONS TO LAST THE OFFICE CLOSURE DURATION.**

**GUARDIAN DRUG STORE IS ALSO ON LIMITED HOURS THROUGH  
CHRISTMAS.**

**MAAMWESYING HEALTH IS ALSO CLOSED DEC 20TH–JAN 6TH.**

**IN CASE OF A MEDICAL EMERGENCY, PLEASE CALL 9-1-1 FOR  
MEDICAL ASSISTANCE.**







# Za-geh-do-win

Information Clearinghouse



## Wellness Series

Maintaining  
Balance in an  
Unbalanced World

**MICHELLE  
THOMAS**

# SELF-CARE THROUGH THE HOLIDAYS

Holidays can add extra and unexpected stress. Enjoy an experiential workshop on self-care strategies; including breathwork, meditation and grounding. These tools will help you get through this busy season.



TUES  
DEC 17  
2024



At 10:00 AM  
- 12:00 PM



Via  
ZOOM

**Register Now**



email

[info@zicresources.ca](mailto:info@zicresources.ca)  
or call 705-692-0240





# HOCKEY **CAMP**

**FREE!!**

What to Expect:

- Power Skating
- Drills & Conditioning
- Positional Play
- Scrimmages
- FUN!!

Group A: Ages 10-13

Group B: Ages 14-17

Maximum 30 kids per group

Instructors:

Jason Melong, Former Pro Player

Sarah Verbeek, Princeton Tigers NCAA D1



January 11-12, 2025

Chapleau Recreation Centre





Chapleau Cree First Nation  
P.O. Box 400 ♦ Fox Lake Reserve ♦ Chapleau, Ontario ♦ P0M 1K0  
Tel: (705) 864-0784 ♦ Fax (705) 864-1760  
[reception@chapleaucree.ca](mailto:reception@chapleaucree.ca)



## EMPLOYMENT OPPORTUNITY

<b>Position:</b>	<b>Health Director (Full-Time)</b>
<b>Location:</b>	The Chapleau Cree First Nation (CCFN) is a member of the Mushkegowuk Council and is situated on the Fox Lake Reserve, located just outside the community of Chapleau. The community is approximately four hours north of Sault Ste. Marie and two hours southwest of Timmins.
<b>Description:</b>	The Health Director will provide leadership and direction in planning, organizing, implementing, maintaining, and evaluating culturally relevant and safe health and wellness programs and services. These responsibilities need to be conducted in a manner that is respectful of diversity and in alignment with the culture and traditions of Chapleau Cree First Nation. The Health Director will also be responsible to coordinate intervention, directly or indirectly in emergency, trauma, and crisis situations. The incumbent would need to communicate effectively with community members and partners about health opportunities and challenges in an informed and knowledgeable manner. This position reports directly to the Band Administrator.
<b>Minimum Education/Experience Qualifications:</b>	<ul style="list-style-type: none"><li>✓ Post-Secondary Health Services Diploma or Degree</li><li>✓ A valid, unencumbered Class G driver's license</li><li>✓ A clear Canadian Police Information Check (CPIC)</li></ul>
<b>Preferred Qualifications:</b>	<ul style="list-style-type: none"><li>✓ Bachelor's degree from an accredited college or university in a Health-related field.</li><li>✓ One-year experience in healthcare management.</li><li>✓ A solid working knowledge of contribution agreements between First Nations and Federal/Provincial partners.</li><li>✓ A demonstrated competency in health management and/or business-related discipline.</li></ul>
<b>Duties/Responsibilities:</b>	<ul style="list-style-type: none"><li>✓ Lead day-to-day supervision of health staff and contractors</li><li>✓ Coordinate all health, traditional and community programming offered by the Health Centre</li><li>✓ Ensure programs and services are in compliance with legislation and organizational policies and procedures</li><li>✓ Ensure financial management of programs and services including financial accountabilities and funding requirements</li><li>✓ Proactively seek out diverse funding sources to sustain health and wellness programs</li><li>✓ Prepare and monitor work plans, including reporting through regular and annual reports</li><li>✓ Respect cultural protocols and acknowledge and embrace the diversity of our knowledge systems</li><li>✓ Lead consultative processes regarding community health planning needs and opportunities</li><li>✓ Ensure emergency management, preparedness planning and/or pandemic planning is in place and well communicated</li><li>✓ Travel will be required</li><li>✓ May be required to respond to emergency situations</li><li>✓ Work overtime as required</li><li>✓ Other related duties as required</li></ul>
<b>Wage:</b>	To commensurate with experience.
<b>Closing Date:</b>	December 20, 2024, or until filled

**Individuals are invited to submit their application, cover letter, résumé and three references to the following:**

Edith Larocque, Band Administrator  
Chapleau Cree First Nation  
P.O. Box 400  
Chapleau, ON P0M 1K0  
[bandadmin@chapleaucree.ca](mailto:bandadmin@chapleaucree.ca)

**We thank all applicants, but only those selected for an interview will be contacted.  
First Nation individuals and CCFN band members are encouraged to apply!**