

**Please register for the programs,
activities and events offered**

Chapleau Cree First Nation

P.O. Box 400
828 Fox Lake Road
Chapleau ON
P0M 1K0

Phone: 705-864-0784
Fax: 705-864-1760
E-mail: reception@chapleaucree.ca

Life's Sacred Journey

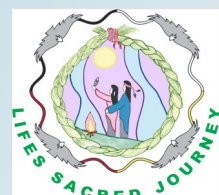
P.O. Box 400
814 Fox Lake Road
Chapleau ON
P0M 1K0

Phone: 705-860-0003
Fax: 705-860-0004
E-mail: bandrep@lifessacredjourney.ca

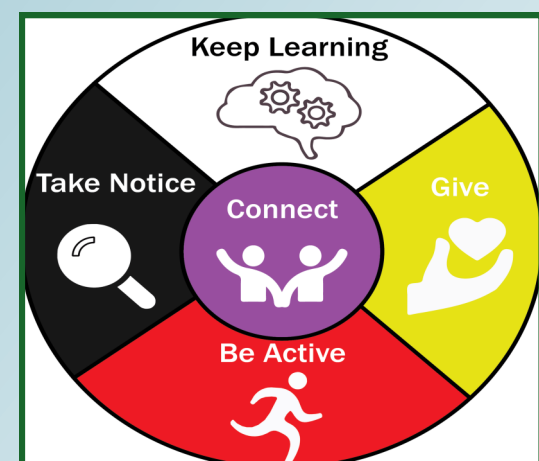
Chapleau Cree Health Centre

P.O. Box 400
801 Fox Lake Road
Chapleau ON
P0M 1K0

Phone: 705-864-0200
Fax: 705-864-0206
E-mail: h.adminassist@chapleaucree.ca



 <https://www.facebook.com/groups/118989737892773>



For the week of
**October 14 to
October 20, 2024**

Winter Hours:

**Monday - Friday
8:30AM - 4:30PM**

Participation and Feedback on
Activities/Events/Programs is
always welcomed

Please submit feedback to
Kyle Corston @ 705-864-0784 or
communityrelations@chapleaucree.ca



This Week's Highlights:

- **THANKSGIVING HOLIDAY**
(offices closed)
- **WINTER OFFICE HOURS BEGIN!!!**
 - **Beading Social**
- **Ladies Only Breast Cancer Awareness Dinner & Social**
- **Apron & Bag Making Workshop**



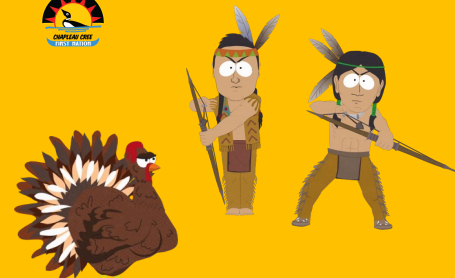
Oški-kīšikāw

MONDAY

Pimahamowi-Pisim

October 14

THANKSGIVING HOLIDAY
(Offices Closed)



**MAKE THIS WEEK
A GREAT WEEK**



**CHAPLEAU CREE
FIRST NATION**

Nīso-kīšikāw

TUESDAY

Pimahamowi-Pisim

October 15



Town Run

10:00 a.m.

Call **Health** at

705-864-0200 before 9am

to get picked up

WINTER HOURS

BEGIN!

Office Hours:

8:30am-4:30pm

Mon-Friday



Beading Social



7pm-9pm @ Health



Apihtawan

WEDNESDAY

Pimahamowi-Pisim

October 16



**Lady's Only Breast
Cancer Awareness
Dinner & Social**



5:30-9pm @ Band Office



Nēwi-kīšikāw

THURSDAY

Pimahamowi-Pisim

October 17



Town Run

10:00 a.m.

Call **Health** at

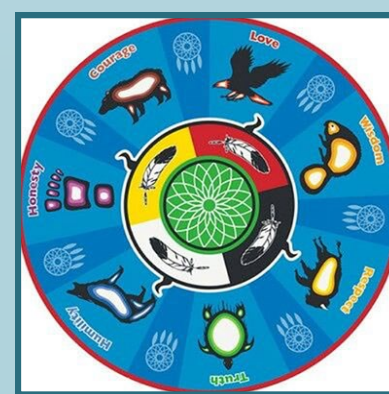
705-864-0200 before 9am

to get picked up

**MASSAGE
W/ KATHLEEN**



3pm-8pm @ Health

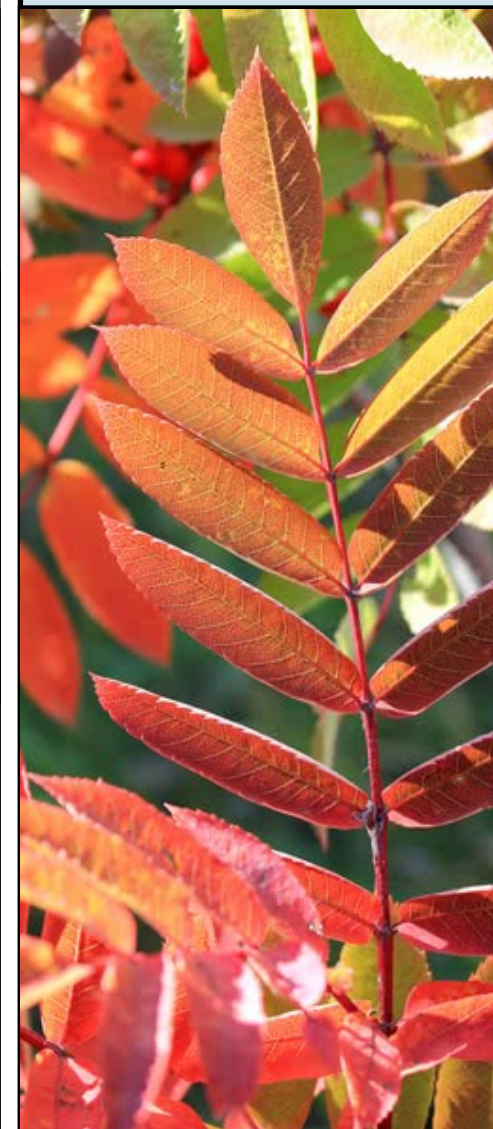


Pahkwēšikani-kīšikāw

FRIDAY

Pimahamowi-Pisim

October 18



**Not Receiving the
Weekly Pamphlet in a
timely manner?
Call **Kyle Corston** at the
Band Office 705 864 0784
and give your email—
you'll
receive the pamphlet
right to your in-box**

Matinawe-Kisikaw

SATURDAY

Pimahamowi-Pisim

October 19

**Apron & Bag Making
Workshop**



9am-3:30pm @ Health

Ayamihēwi-kīšikāw

SUNDAY

Pimahamowi-Pisim

October 20

**Apron & Bag Making
Workshop**

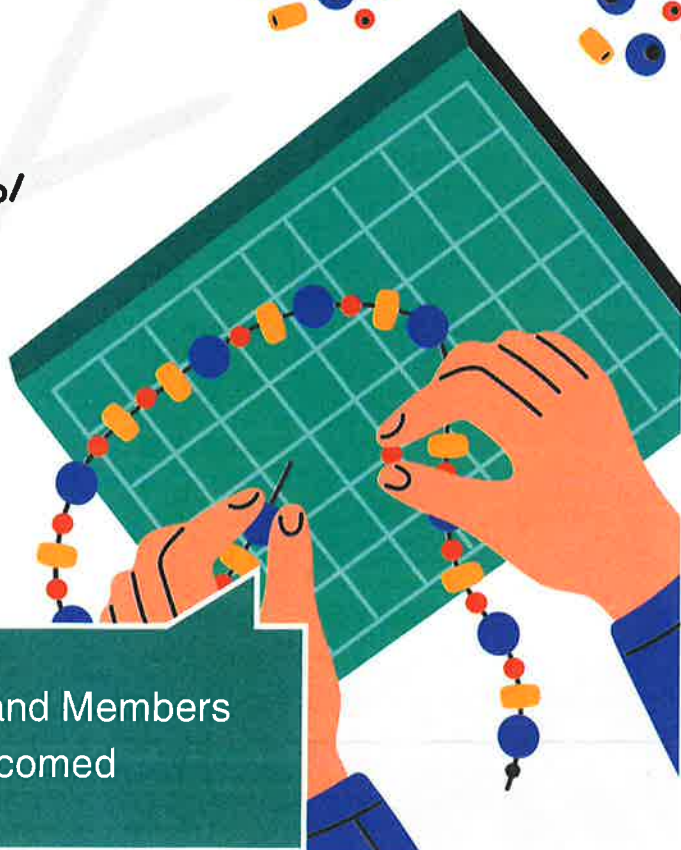
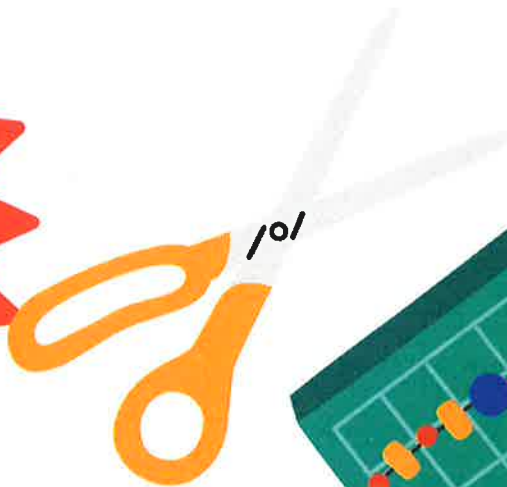


9am-3:30pm @ Health

ADULTS ONLY BEADING SOCIAL



**TUESDAYS
OCTOBER 1, 15 & 29
7PM - 9PM
AT HEALTH CENTRE**



to register call: Chapleau Cree Health
Centre - 705-864-0200

for inquiries call: Nathalie - ext. 203

10 participants only

Open to CCFN Band Members
Waitlist welcomed



Massage Day

with Kathleen Bouchard

October 17th
3:00 PM - 8:00 PM
at Health Centre

*Call Health to book your
appointment 705-864-0200.
Priority CCEN Members,
waitlist welcomed*





APRON & BAG MAKING WORKSHOP

OCTOBER 19 & 20, 2024
9AM - 3:30PM

FACILITATED BY:
RAVEN MARTIN OF
RAVEN CREATIONS

TO REGISTER CALL:
CHAPLEAU CREE HEALTH
CENTRE - 705-864-0200

10 PARTICIPANTS ONLY

FOR INQUIRIES CALL:
NATHALIE - EXT. 203

OPEN TO CCFN BAND MEMBERS
WAITLIST WELCOME

