

**Please register for the programs,  
activities and events offered**

**Chapleau Cree First Nation**

P.O. Box 400  
828 Fox Lake Road  
Chapleau ON  
P0M 1K0

Phone: 705-864-0784  
Fax: 705-864-1760  
E-mail: reception@chapleaucree.ca

**Chapleau Cree Health Centre**

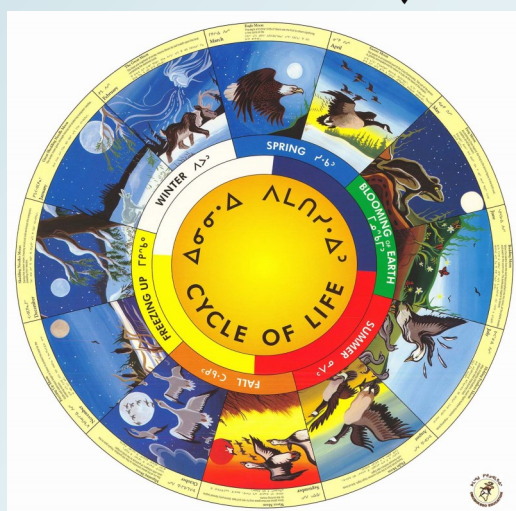
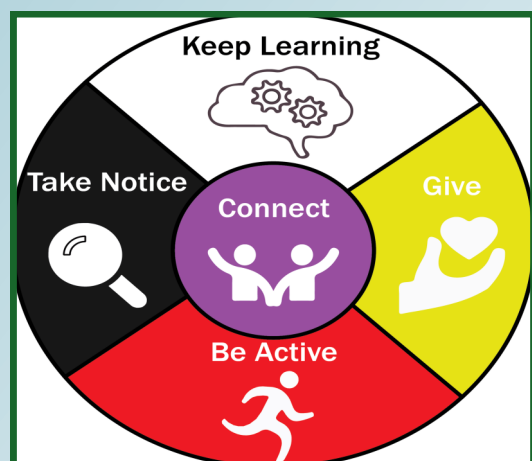
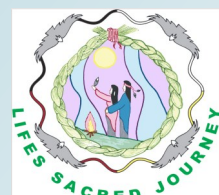
P.O. Box 400  
801 Fox Lake Road  
Chapleau ON  
P0M 1K0

Phone: 705-864-0200  
Fax: 705-864-0206  
E-mail: h.adminassist@chapleaucree.ca

**Life's Sacred Journey**

P.O. Box 400  
814 Fox Lake Road  
Chapleau ON  
P0M 1K0

Phone: 705-860-0003  
Fax: 705-860-0004  
E-mail: bandrep@lifessacredjourney.ca



For the week of  
**August 5 to  
August 11, 2024**

**Summer Hours:**

**Monday - Thursday  
8:00AM - 5:00PM**

**Friday  
8:00AM - NOON**

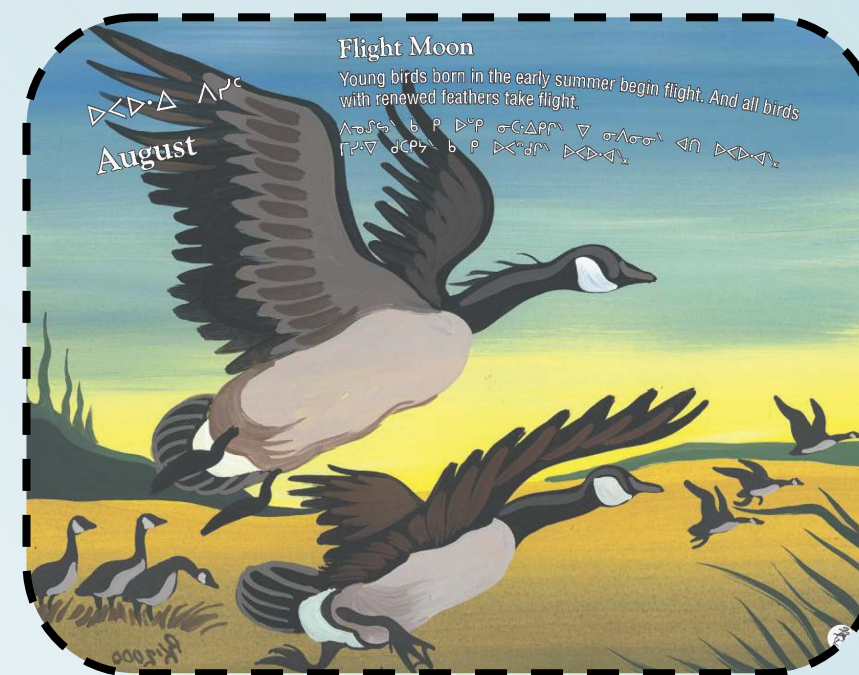
Participation and Feedback on  
Activities/Events/Programs is  
always welcomed

Please submit feedback to  
**Kyle Corston @ 705-864-0784** or  
[communityrelations@chapleaucree.ca](mailto:communityrelations@chapleaucree.ca)



***This Week's Highlights:***

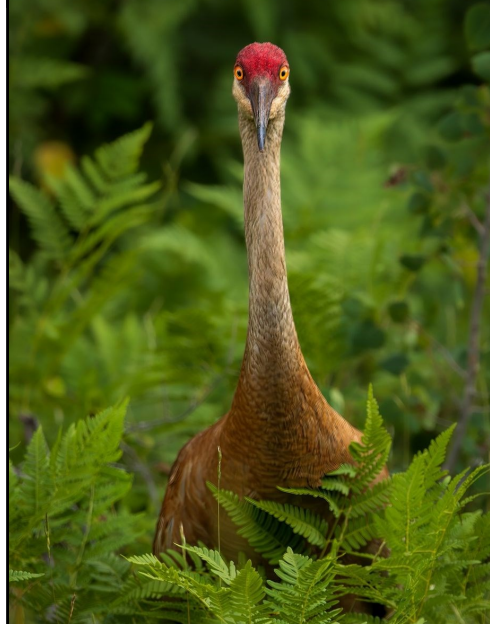
- **CIVIC HOLIDAY (Offices Closed)**
  - Powwow Dance Practice & Teachings
- **LSJ—Women's Sharing Circle**
  - Reflexology w/ Kathleen
  - St. John's IRS Memorial
- **Powwow Social Night & Registration**
  - CCFN Powwow Weekend!!!





**Oški-kīšikāw**  
**MONDAY**  
**Ohpahowi-Pisim**  
**August 5**

**CIVIC HOLIDAY**  
**(Offices Closed)**



**Nīso-kīšikāw**  
**TUESDAY**  
**Ohpahowi-Pisim**  
**August 6**



**Town Run**  
10:00 a.m.  
Call **Health** at  
**705-864-0200** to get  
picked up



**Powwow Dance Teachings**  
**& Practice**



6pm-7:30pm @ Band Office



**Apihtawan**  
**WEDNESDAY**  
**Ohpahowi-Pisim**  
**August 7**



**LSJ - WOMENS**  
**SHARING CIRCLE**



6pm-8pm @ Band Office



**Nēwi-kīšikāw**  
**THURSDAY**  
**Ohpahowi-Pisim**  
**August 8**

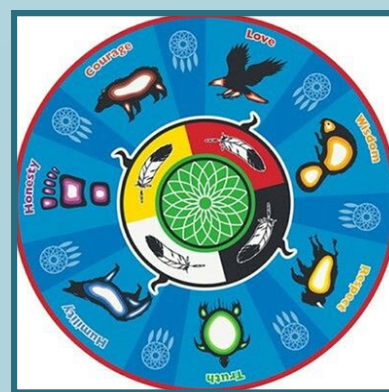


**Town Run**  
10:00 a.m.  
Call **Health** at  
**705-864-0200** to get  
picked up

**REFLEXOLOGY**  
**w/ KATHLEEN**



3pm-8pm @ Health



**Pahkwēšikani-kīšikāw**  
**FRIDAY**  
**Ohpahowi-Pisim**  
**August 9**

**St. John's IRS**  
**Memorial**



10:00am @ St. John's IRS  
Memorial Site

Light lunch to follow  
@ CCFN Band Office

**CCFN POW WOW**  
**Social & Registration**



6pm-8:30pm @ Band Office

Not Receiving the  
Weekly Pamphlet in a  
timely manner?  
Call **Kyle Corston** at the  
**Band Office 705 864 0784**  
and give your email—  
you'll  
receive the pamphlet  
right to your in-box

**Matinawe-Kisikaw**  
**SATURDAY**  
**Ohpahowi-Pisim**  
**August 10**

**CCFN POW WOW**



12pm @ Pow wow  
Grounds



**Ayamihēwi-kīšikāw**  
**SUNDAY**  
**Ohpahowi-Pisim**  
**August 11**

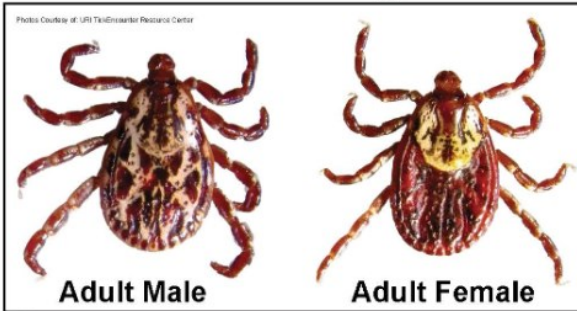
**CCFN POW WOW**



11am @ Powwow  
Grounds

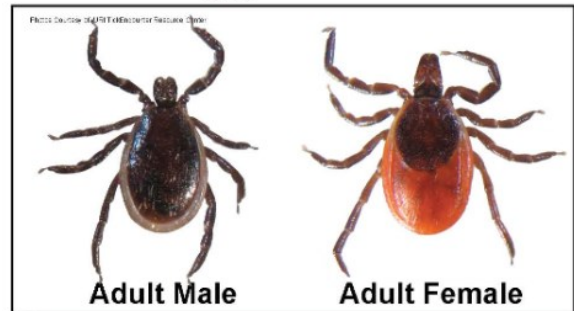


## American Dog Tick



does **Not** transmit Lyme disease

## Blacklegged Tick (Deer Tick)



can transmit Lyme disease

**Ticks have been found on the reserve.**

Chapleau is not considered to be a high-risk area for tick-borne illnesses such as Lyme disease or Anaplasmosis, which can be carried by Blacklegged ticks.

However, ticks can be transported by migratory birds and can be encountered anywhere there is a habitat for them.

Long grass and weeds are an ideal habitat for ticks.

**To help discourage ticks from being on your property, do the following:**

- **Mow the lawn regularly.**
- Remove leaf litter, brush and weeds.
- Keep tree branches and shrubs trimmed to let in more sunlight.

For all rental units except Mukeso House, tenants are responsible for grass cutting.

**To help prevent tick bites, do the following:**

- Wear light coloured clothing so ticks are easier to spot.
- Keep covered with long pants and a long-sleeved shirt.
- Wear closed footwear, socks, and tuck your pants into your socks.
- Use a tick repellent that has "DEET" (follow the manufacturer's directions).
- Put a tick and flea collar on your pets, and check them for ticks periodically.
- Search your body well for ticks after being in grass or bushy areas. Pay special attention to groin, scalp, and armpits. Use a mirror to check your back.

# Community Powwow

## Practice Nights

open to all ages  
facilitated instruction  
open practice  
CCFN Band Members only

Practice sessions will take place on the following evenings:

First session:  
Tuesday, July 23, 2024  
6-7:30pm

Second session:  
Tuesday, July 30, 2024  
6-7:30pm

Third session:  
Tuesday, August 6, 2024  
6-7:30pm

Location: Band Office Basement



Must register with:

Charnelle 705-860-0001 Or Hilary 705-860-0003



Life's Sacred Journey presents:

# WOMEN'S SHARING CIRCLE

## POSTPONED



In a circle, we are all equal.  
No one in front of you,  
No one behind you,  
No one above you and  
No one below you.

CCFN Members only  
Light refreshments provided

**NEW DATE:**

**WEDNESDAY AUGUST 7, 2024**

**6-8PM**

**CCFN BAND OFFICE BASEMENT**

Registration please contact:  
Charnelle Kapashesit 705-860-0001



# REFLEXOLOGY



Thursday Aug 8, 2024

3:00-5:00 PM & 7:00-8:00 PM

30 minute Reflexology Appointments available

With Kathleen Bouchard

By Appointment ONLY.

CCFN Members, Waitlist welcomed for others.

Please call **Health** at **705-864-0200** to book your session.





**CCFN POW WOW UPDATE**  
**ST JOHN'S RESIDENTIAL MEMORIAL**  
**AUG 9, 2024**  
**MEMORIAL AT GRAVESITE WILL BE**  
**AT 10:00 AM**  
**WITH A LUNCH TO FOLLOW AT CCFN**  
**BAND OFFICE**




**POW WOW SOCIAL NIGHT**  
**AUG 9, 2024**  
**FROM 6:00 PM TO 8:30 PM AT THE BAND**  
**OFFICE BASEMENT.**  
**SNACKS AND APPS**  
**KARAOKE**  
**ALL WELCOME.**

---







**Rites of Passage  
Teachings  
by Clayton Cheechoo  
(Mushkegowuk Health)**

**August 14, 2024**

**6:00 - 9:00 pm**

**Turtlelodge**

**Please register at Health  
and join us  
705-864-0200**





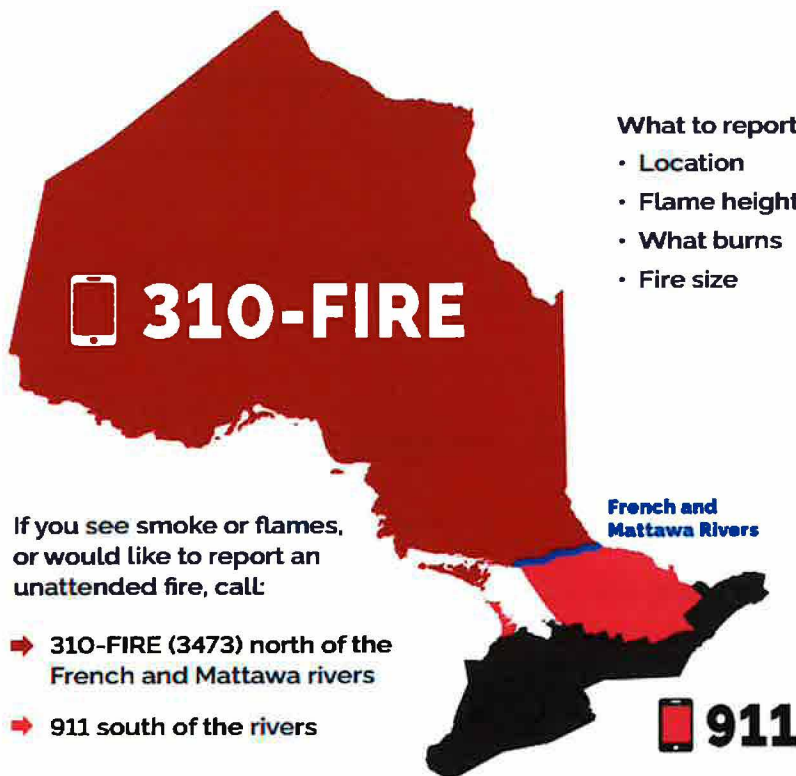
# WILDLAND FIRE INFORMATION & CONTACTS FOR INDIGENOUS LEADERS AND ORGANIZATION OFFICIALS



During the wildland fire season, the Aviation, Forest Fire and Emergency Services (AFFES) program of the Ministry of Natural Resources (MNR) consistently keeps information up to date regarding wildland fires across the fire region. AFFES regularly refreshes and maintains current data on the ongoing wildland fires within the affected areas.

## What to do if you see a wildland fire

To report a wildland fire located north of the French and Mattawa rivers, please dial 310-FIRE. To report a wildland fire located south of the French or Mattawa Rivers, please dial 9-1-1. Information to report can include your name, location of the fire, flame height, what is burning and fire size.



**310-FIRE**

**French and Mattawa Rivers**

**911**

**What to report:**

- Location
- Flame height
- What burns
- Fire size

If you see smoke or flames, or would like to report an unattended fire, call:

- ➔ 310-FIRE (3473) north of the French and Mattawa rivers
- ➔ 911 south of the rivers

## To learn more information about the current wildland fire situation

AFFES has multiple sources you can use to access information on current wildland fires.

To access our interactive fire map and to view daily wildland fire updates—including active fires, the fire hazard and any restrictions in place—visit <https://www.ontario.ca/page/forest-fires>.



Check out our Facebook, Instagram and X (formerly Twitter) accounts for safety tips and other wildland fire related information.

- Facebook: [@ONForestFires](#) [@ONFeudeforêt](#)
- Instagram: [@ONForestFires](#) [@ONFeudeforêt](#)
- X: [@ONForestFires](#) [@ONFeudeforêt](#)

### **To request more information about specific wildland fires**

For information regarding a specific wildland fire that may be of concern, please contact your local Fire Management Headquarters. Contact information can be found by visiting <https://www.ontario.ca/page/fire-management-offices>.

If you are unsure which Fire Management Headquarters to contact, visit <https://www.ontario.ca/page/forest-fires> and click on the interactive fire map link - [Forest Fire Info Map \(gov.on.ca\)](#) - to determine which office is located near you.

You can also call one of our information lines in your corresponding region:

Northeast: 1-888-220-7242

Northwest: 1-807-323-1851 or 1-807-937-7241

### **For safety information related to wildland fires**

For information on hazards related to wildland fires, safety tips and how to prepare for wildland fires, please visit <https://www.ontario.ca/page/forest-fires-safety-information>.

### **Information on wildland fire smoke**

For information on smoke drift conditions across North America, visit <https://firesmoke.ca/>.  
For information on air quality in your area, visit <https://weather.gc.ca/>.

### **Information on highway conditions**

For information on highway conditions including road closures, visit <https://511on.ca/>.

### **Concerns around critical services**

If you have concerns regarding critical services being impacted by wildland fires, please reach out to the specific service provider.

### **Emergency Management Ontario**

The Provincial Emergency Operations Centre (PEOC) coordinates provincial support and resources for communities experiencing emergencies, including evacuations, and can assist in facilitating any requests for assistance to supplement and support community emergency management plans.

The PEOC is staffed 24 hours a day, 7 days a week, 365 days a year and can be reached by phone at 416-314-0472 or toll free at 1-866-314-0472, or by email at [peocdo01@ontario.ca](mailto:peocdo01@ontario.ca).

You can also follow on X at [@OntarioWarnings](#) or [@AlertesOntario](#).





## Chapleau Cree First Nation

# Get Rogers 5G plans

Starting at

# \$45/mo<sup>±</sup>

after program discount<sup>1</sup> and Automatic Payments Discount<sup>2</sup>  
when you bring your own device.



## ROGERS Authorized Dealer

Sign up today!

Contact your Rogers Authorized dealer with your status card and I will help you get started or Visit the secure Portal for more information on plans and devices and to and place order

**Linda Hunter**  
Account Executive  
Rogers Authorized Dealer  
Beyond Wireless  
[linda.hunter@beyondwireless.ca](mailto:linda.hunter@beyondwireless.ca)  
m 705 507 5148

Subject to change without notice. A Setup Service Fee of \$60 applies to setup your device and related services. Taxes extra. Rogers Preferred Program: Employee verification is required. Rogers reserves the right to request proof of employment from each Individually Paid Employee at any time. A one-time Employee Pricing Fee of \$50 may apply for existing customer. Existing customer's with in-market Rogers consumer plans with 6 months or less term on their term plan switching to the plan above are not eligible to receive this discount. This offer cannot be combined with any other carrier, plan promotions and/or discounts unless made eligible by Rogers. Plan and device will be displayed separately on your bill. <sup>±</sup> Where applicable, additional airtime, data, long distance, roaming, add-ons, provincial 9-1-1 fees (if applicable) and taxes are extra and billed monthly. However, there is no airtime charge for calls made to 9-1-1 from your Rogers wireless device. Plan includes calls and messages from Canada to Canada numbers only. On the Rogers Network or in an Extended Coverage area, excluding calls made through Call Forwarding, Video Calling or similar services. <sup>1</sup> Discount of up to \$25/month available on both primary and additional lines. Excludes trick, hotspot, voicemail, Talk & Text and Wireless Home Phone additional lines. May not be combined with any other monthly device fee discount offer, unless specifically stated. Plan change or phone upgrade will suspend the discount. <sup>2</sup> A \$5/month discount is available on eligible Rogers Preferred Program customers who set up Automatic Payments on their account (not res prepaid). You must keep Automatic Payments active with an eligible plan to maintain this discount. Account will end if you move to an ineligible plan or cancel Automatic Payments. Rogers & Device are related trademarks and legal entities of Rogers Communications Inc. or an affiliate used under license. © 2024 Rogers Communications.





CHAPLEAU CREE FIRST NATION  
P.O. Box 400 ♦ Fox Lake Reserve ♦ Chapleau, Ontario ♦ POM 1K0  
Tel: (705) 864-0784 ♦ Fax (705) 864-1760



## EMPLOYMENT OPPORTUNITY

**Position:** REGISTERED NURSE

**Location:** The Chapleau Cree First Nation (CCFN) is a member of the Mushkegowuk Council and is situated on the Fox Lake Reserve, located just outside the community of Chapleau. The community is approximately four hours north of Sault Ste. Marie and two hours southwest of Timmins.

**Description:** The Registered Nurse shall be responsible providing medical nursing and community health prevention services to the community members.

**Preferred Qualifications:**

- ✓ Registered Nurse certification in good standing with the College of Nurses of Ontario
- ✓ Exercising good judgement
- ✓ Excellent interpersonal and communication skills
- ✓ Valid Driver's License
- ✓ Clear CPIC and Vulnerable Sector Screening

**Skills:**

- ✓ Ability to work with people of various age groups
- ✓ Program development and delivery
- ✓ Ability to work independently and as a team player
- ✓ Home and Community Care services
- ✓ Previous clinical experience in First Nation communities considered an asset

**Duties/Responsibilities:**

- ✓ Access plan, implement and evaluate clients' needs and services
- ✓ Builds capacity, improves performance and enhances the quality of the working environment by sharing knowledge and experience with colleagues, students, First Nation members and other members of the health care team.
- ✓ Maintain statistics, timely and accurately maintain client records
- ✓ Research interesting, innovative programs and delivery of clinical and community health programming.
- ✓ Familiarity with Microsoft Office tools and a willingness to learn and use other software including electronic charting tools.
- ✓ Design PowerPoint presentations for community and preparing related material
- ✓ Coordinate client appointments
- ✓ Provide recommendations to recruit experienced health professionals
- ✓ Provide visits to members requiring nursing services
- ✓ Assist in program delivery when requested Travel may be required for medical appointment both in and out of town
- ✓ Overtime as required

**Hours of Work:** 32 hours per week

**Wage:** \$ 65,000.00 – \$ 70,000.00

**Closing Date:** Until filled

**Individuals are invited to submit their application, résumé and three references to the following:**

Edith Larocque, Band Administrator  
Chapleau Cree First Nation  
P.O. Box 400  
Chapleau, ON POM 1K0

[bandadmin@chapleaucree.ca](mailto:bandadmin@chapleaucree.ca)

**Subject Line: Employment: Registered Nurse**

*Note: Electronic submissions missing the above subject may be missed from consideration.*

**We thank all applicants, but only those selected for an interview will be contacted.**

**First Nation individuals and CCFN band members are encouraged to apply!**