

**Please register for the programs,
activities and events offered**

Chapleau Cree First Nation

P.O. Box 400
828 Fox Lake Road
Chapleau ON
P0M 1K0

Phone: 705-864-0784
Fax: 705-864-1760
E-mail: reception@chapleaucree.ca

Chapleau Cree Health Centre

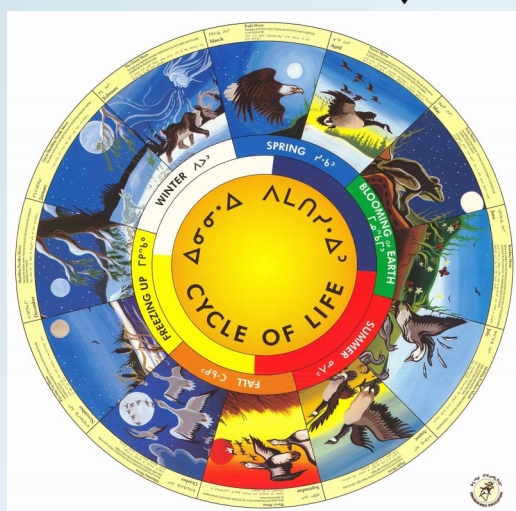
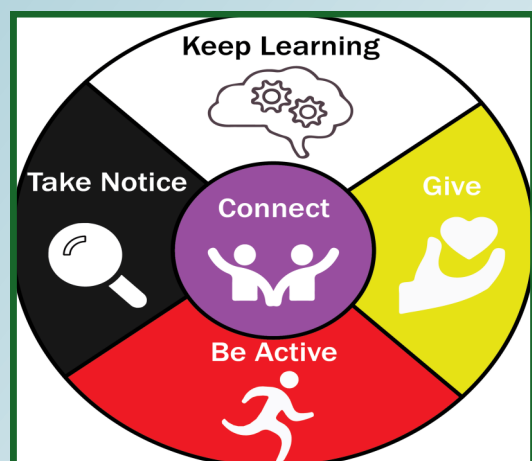
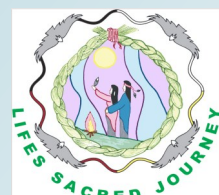
P.O. Box 400
801 Fox Lake Road
Chapleau ON
P0M 1K0

Phone: 705-864-0200
Fax: 705-864-0206
E-mail: h.adminassist@chapleaucree.ca

Life's Sacred Journey

P.O. Box 400
814 Fox Lake Road
Chapleau ON
P0M 1K0

Phone: 705-860-0003
Fax: 705-860-0004
E-mail: bandrep@lifessacredjourney.ca



For the week of
**July 22 to
July 28, 2024**

Summer Hours:

**Monday - Thursday
8:00AM - 5:00PM**

**Friday
8:00AM - NOON**

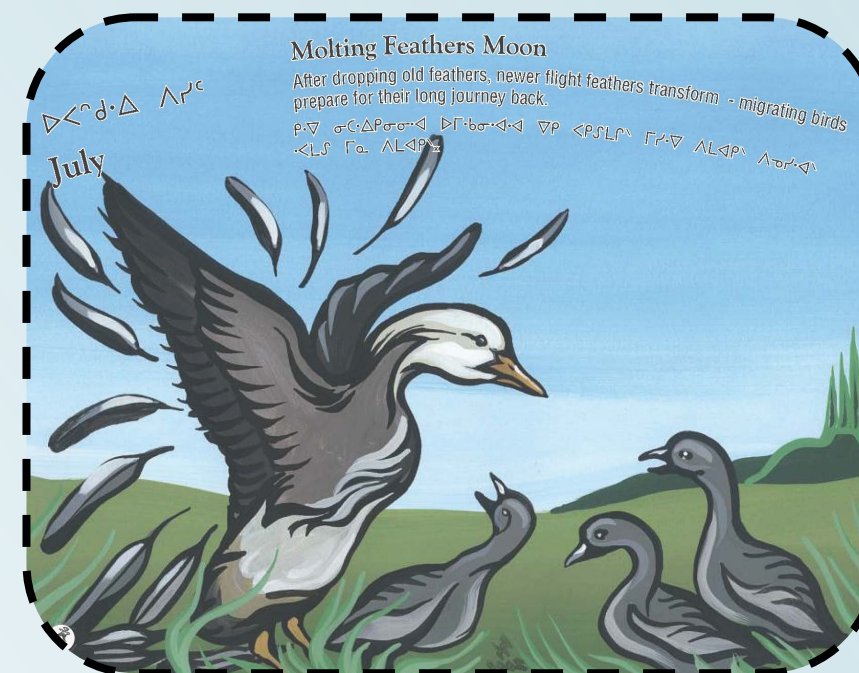
Participation and Feedback on
Activities/Events/Programs is
always welcomed

Please submit feedback to
Kyle Corston @ 705-864-0784 or
communityrelations@chapleaucree.ca



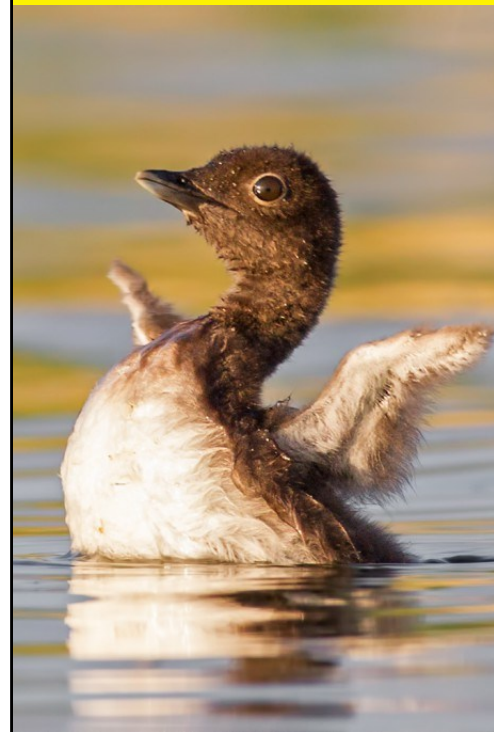
This Week's Highlights:

- Powwow Dance Teachings & Practice
- Community Haircut
- Self Care Day Presentations & Dinner



Oški-kīšikâw
MONDAY
Opaskowi-Pisim
July 22

HAPPY MONDAY



Nīso-kīšikâw
TUESDAY
Opaskowi-Pisim
July 23



Town Run
10:00 a.m.
Call **Health** at
705-864-0200 to get
picked up



**Powwow Dance Teachings
& Practice**



6pm-7:30pm @ Band Office



Apihtawan
WEDNESDAY
Opaskowi-Pisim
July 24

**COMMUNITY HAIRCUT
DAY**



10am-4pm @ Health



Nēwi-kīšikâw
THURSDAY
Opaskowi-Pisim
July 25



Town Run
10:00 a.m.
Call **Health** at
705-864-0200 to get
picked up



**Self Care Day
Presentations & Dinner**



5:30-7:30pm@Band Office



Pahkwēšikani-kīšikâw
FRIDAY
Opaskowi-Pisim
July 26

SMILE!



IT'S FRIDAY!



**Not Receiving the
Weekly Pamphlet in a
timely manner?
Call **Kyle Corston** at the
Band Office 705 864 0784
and give your email—
you'll
receive the pamphlet
right to your in-box**

Matinawe-Kisikaw
SATURDAY
Opaskowi-Pisim
July 27



Ayamihêwi-kīšikâw
SUNDAY
Opaskowi-Pisim
July 28



CELEBRATION OF LIFE



Angela Joy McWatch

February 6, 1974

-

July 3, 2024

Our sincerest condolences to family and friends on the passing of your loved one.

ATTENTION COMMUNITY MEMBERS:



It has come to our attention that there are now ticks in our community. Please be sure to be aware and take precautions when outdoors, especially with family pets!

Meegwetch!



Community Powwow

Practice Nights

open to all ages

facilitated instruction

open practice

CCFN Band Members only

Practice sessions will take place on the following evenings:

First session:

Tuesday, July 23, 2024

6-7:30pm

Second session:

Tuesday, July 30, 2024

6-7:30pm

Third session:

Tuesday, August 6, 2024

6-7:30pm

Location: Band Office Basement



Must register with:

Charnelle 705-860-0001 Or Hilary 705-860-0003

FREE OF CHARGE

Wills and Estate Management

Nicole Richmond, an Anishinabe lawyer from Biigtigong Nishnaabeg, is returning to provide Wills and Estate Planning to On-Reserve Band Members for Singles and Couples.

**A limited number of places are available for
Off-Reserve Band Members who live
in the Chapleau area.**

If you are interested in making an appointment, please contact Padraic Taaffe at 705-864-0784 or email edo@chapleaucree.ca

Appointments Available

Monday July 22nd

All Day

Tuesday July 23rd

Morning

September 9th to 13th

Call Padraic Taaffe to make an appointment

MUST PRE-REGISTER
CALL HEALTH @705-864-0200

Self Care Day

PRESENTATION & DINNER

July 25th, 2024

Dinner @ 5:30 PM

at Band Complex

Presentation after dinner

**DOOR
PRIZES**





Life's Sacred Journey presents:

WOMEN'S SHARING CIRCLE

POSTPONED



In a circle, we are all equal.
No one in front of you,
No one behind you,
No one above you and
No one below you.

CCFN Members only
Light refreshments provided

NEW DATE:

WEDNESDAY AUGUST 7, 2024

6-8PM

CCFN BAND OFFICE BASEMENT

Registration please contact:
Charnelle Kapashesit 705-860-0001





Group Art Therapy Series

Join Melody Hawdon, Registered Psychotherapist and Mental Health and Wellness Worker, and Emily Piraino, Art Therapy Student, in a series of free art therapy workshops for adults aged 18+ striving for Mental Wellness

Chapleau Cree FN

Maamwesying 814 Fox Lake

Mon from 6-8pm

Jul 22nd, Aug 26th, Sept 9th & 23rd, Oct 7th & 21st

Brunswick House FN

Health Centre

Tues from 1-3pm

Jul 23rd, Aug 27th, Sept 10th & 24th, Oct 8th & 22nd


Wawa

Michipicoten FN Family Well-being Lodge 3 Maple St.

Wed from 6-8pm

Jul 24th, Aug 28th, Sept 11th & 25th, Oct 9th & 23rd

Art materials and refreshments will be provided
No prior art experience required
We will have door prizes!



Self-register for this free series with:
Diedre Dupuis, Client Care Coordinator
705-856-8282 or Toll-free: 1-833-564-2726
Diedre.Dupuis@nmninoeyaa.ca



MAAMWESYING
NORTH SHORE COMMUNITY HEALTH SERVICES INC.

Worlds Best **Indigenous** Marketplace.

Turn your paintings into monthly income
Licensing opportunity!

Want to see your paintings on home décor products? Biskane.com has a licensing partnership that could be perfect for you!

It's easy – the company licenses your images, you retain ownership of your image.

It's profitable – you earn money from sales of products featuring your art.

If interested, please contact
info@biskane.com or sign up directly:

Sign up on Biskane.com/sign-up (it's FREE)



Handmade



Cultural Design



Indigenous Artist



Join today on Biskane.com





Chapleau Cree First Nation

P.O. Box 400 ♦ Fox Lake Reserve ♦ Chapleau, Ontario ♦ P0M 1K0

Tel: (705) 864-0784 ♦ Fax (705)864-1760

reception@chapleaucree.ca



BIDDING OPPORTUNITY Provision of Catering Services to Chapleau Cree First Nation Services

Brief Description	For approximately Entrée, fruit, vegetables, dessert as well as sugar free desserts. Coffee, water, juice, tea. *Please Note: Adjustments will be made as for any increases in the number of participants*
Venue	Chapleau Cree

Breakfast

Lunch

Snacks

Dinner

- Interested bidders will be required to submit a healthy menu for the event, to be included with the bid.
- All shopping, storage, transportation, preparation, serving and clean-up of food supplies will be the responsibility of the successful bidder.
- Kitchen, kitchen cooking equipment, food warmer, tablecloths, napkins, utensils will be provided by Chapleau Cree
- Any leftover food and refreshments shall remain on site.
- The successful bidder will be responsible for clean up of all cooking equipment being used.
- Kitchen must be returned to original condition.
- Any additional kitchen supplies and/or special equipment, caterer must consult directly with the event contact indicated below and provide a 3-day advance notice of any requests.
- If successful bidder has any special requests, must speak directly with the event contact.
- Bidder to communicate with event contact for all other details.

Interested candidates are welcome to submit a bid and proposed menu plan to:

Chapleau Cree First Nation

P.O. Box 400

Chapleau, ON P0M 1K0

or by email to

Subject Line:

Note: Electronic bids missing the above subject may be missed from consideration.

Deadline to submit bid and menu is: